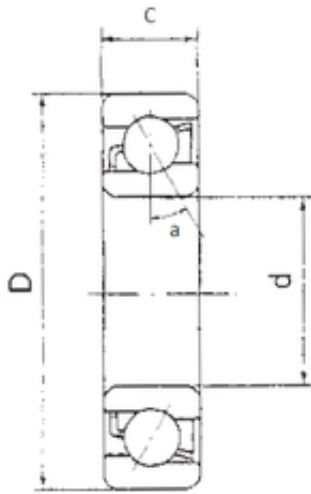




KRS Guide Wheel Bearing Co., Ltd

30 mm x 62 mm x 16 mm FBJ 7206B angular contact ball bearings



Bearing No. 7206B

Size	30x62x16 mm
Bore Diameter	30 mm
Outer Diameter	62 mm
Width	16 mm
d	30 mm
D	62 mm
B	16 mm
C	16 mm
Angle (°)	40 °
Weight	0,2 Kg
Basic dynamic load rating (C)	23800 kN
Basic static load rating (C0)	15600 kN
(Grease) Lubrication Speed	8500 r/min

7206B Bearing 2D drawings and 3D CAD models