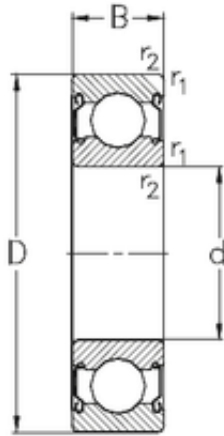




KRS Guide Wheel Bearing Co., Ltd

30 mm x 55 mm x 13 mm NKE 6006-2Z deep groove ball bearings



Bearing No. 6006-2Z

| | |
|-------------------------------|-------------|
| Size | 30x55x13 mm |
| Bore Diameter | 30 mm |
| Outer Diameter | 55 mm |
| Width | 13 mm |
| d | 30 mm |
| D | 55 mm |
| B | 13 mm |
| C | 13 mm |
| r1 min. | 1 mm |
| r2 min. | 1 mm |
| Weight | 0,115 Kg |
| Basic dynamic load rating (C) | 13,2 kN |
| Basic static load rating (C0) | 8,3 kN |

6006-2Z Bearing 2D drawings and 3D CAD models