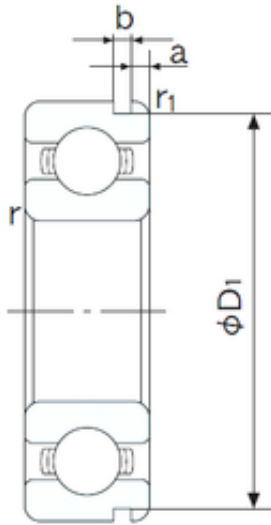




# KRS Guide Wheel Bearing Co., Ltd



25 mm x 62 mm x 17 mm NACHI 6305N deep groove ball bearings

Bearing No. 6305N

6305N Bearing 2D drawings and 3D CAD models

Size	25x62x17 mm
Bore Diameter	25 mm
Outer Diameter	62 mm
Width	17 mm
d	25 mm
D	62 mm
B	17 mm
C	17 mm
a	3.28 mm
b	1.9 mm
r min.	1.1 mm
r1 min.	0.5 mm
D1	59.61 mm
Weight	0.232 Kg
Basic dynamic load rating (C)	23,6 kN
Basic static load rating (C0)	12,1 kN
(Grease) Lubrication Speed	11000 r/min
Bore Type	Cylindrical Bore
Enclosure	Open
Configuration	Single Row
Bore Size	25 mm
Outside Diameter	62 mm
Width	17 mm
Fillet Radius/Chamfer	1.1 mm
r1	0.5 mm



## KRS Guide Wheel Bearing Co., Ltd

Groove Width	1.9 mm
Groove Diameter	59.6 mm
a (max)	3.3 mm
Dynamic Load Rating	23,600 N
Static Load Rating	12,100 N
Limiting Speed - Grease	12,000 rpm
Limiting Speed - Oil	14,000 rpm
Factor fo	12.2
Radial Clearance	0.005 to 0.020 mm
da (min)	32 mm
Da (max)	55 mm
Dx (min)	68.5 mm
ra (max)	1 mm
Cy (max)	4.6 mm